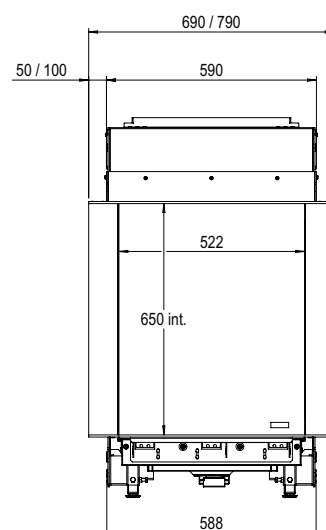
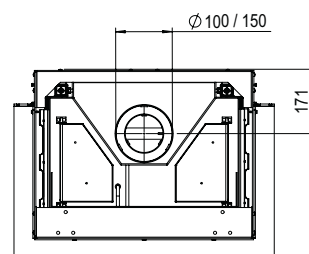
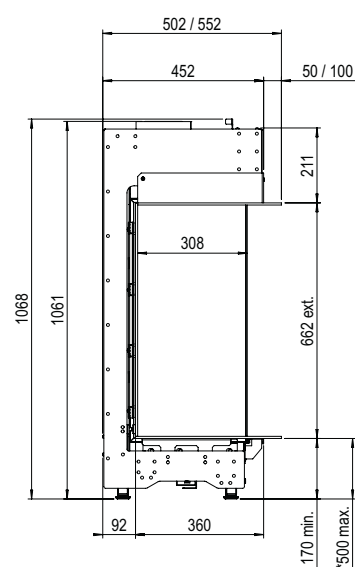


MatriX | 450/650 III



*Incl. optional adjustable feet



ENERG
енергия · ενεργεια

Y IIA
IE IA

**MatriX 450/650 I, II,
III**

Faber

A++

A+

A

B

C

D

E

F

G

A

6,8

kW

ENERGIA · ЕНЕРГИЯ · ΕΝΕΡΓΕΙΑ · ENERGIJA · ENERGY · ENERGIE · ENERGI

2015/1186

Specifications

MatriX 450/650 III

Type	Built-in
Model	Three-sided model
Exterior dimensions WxHxD in mm	690 x 1068 x 502
Fire display WxHxD in mm	522 x 650 x 308
System	Log Burner 2.0®
Decoration	Log set
Back walls	Smooth steel
Remote	Symax
Power (kW)	6,8
Operating system	Mertik
Energylabel	A

There is **so much to tell...**

For more information, please take a look at the website

www.faberfires.com