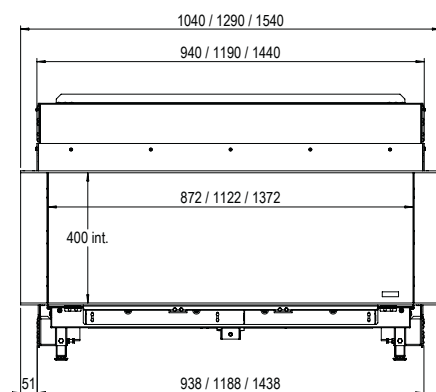
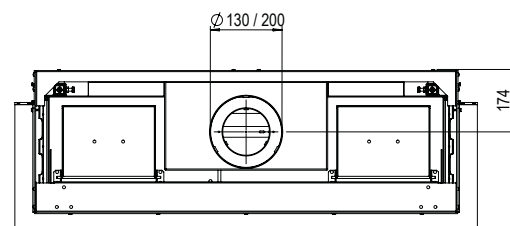


LINEAR FIRE

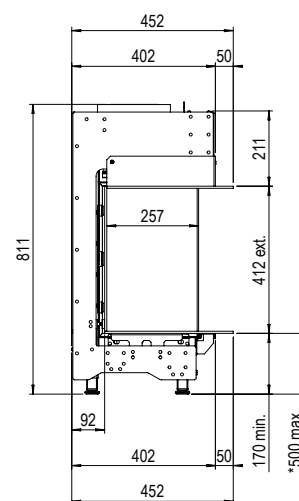
MatriX | 1050/400 III



NEW



* incl. optional adjustable feet



ENERG Y IIA
енергия · ενεργεια
IE IA

MatriX 1050/400
I,II,III

Faber

A++
A+
A
B
C
D
E
F
G

A

8,7 kW

ENERGIA · ЕНЕРГИЯ · ΕΝΕΡΓΕΙΑ · ENERGIJA · ENERGY · ENERGIE · ENERGI

2015/1186

Specifications MatriX 1050/400 III

Type	Built-in
Model	Three-sided model
Exterior dimensions WxHxD in mm	1290 x 811 x 452
Fire display WxHxD in mm	1122 x 400 x 257
System	Double Line Burner
Decoration	Log set or Carrara pebbles or Grey split stones
Back walls	Smooth steel
Remote	ITC remote
Power (kW)	8,7
Operating system	Honeywell
Energylabel	A

For more information, please take a look at the website

www.faberfires.com

There is **so much to tell...**